

Beo™ Seating

Kimball® Office







The exposed wood top rail exemplifies Beo's graceful aesthetic.



Inscribed reveals where the arms join the leg uprights confer simple sophistication.

Perfect choice.

Beo has everything desired in guest seating: visual appeal, physical comfort, and dependable value. The collection is very versatile, featuring six distinctive back designs with body-appropriate curves for soothing support. Skillfully crafted by Kimball Office, Beo adds natural beauty and character to any environment.





K58AA
Half Back
22 $\frac{1}{4}$ " W 25 $\frac{5}{8}$ " D 32 $\frac{3}{4}$ " H

K58BB
Three-quarter Back
22 $\frac{1}{4}$ " W 25 $\frac{5}{8}$ " D 32 $\frac{3}{4}$ " H



Perfect balance.

Defined by compact proportions, a timeless aesthetic, and inviting comfort, Beo confidently bridges traditional and contemporary interiors. It mingles easily in a variety of private and public settings, including executive offices, reception areas, and healthcare spaces. Exacting quality furthers Beo's widespread appeal.

- The wipe-away seat on partial back models allows for easy cleanup.
- Carefully crafted steam-bent European Beech frame supports the body's curves.
- Beo's "wall-saver" back legs flare slightly so they contact the baseboard first, saving the wall's finish and the chair's back.
- Button Back model offers optional contrasting fabric on button.



K58CC
Ladderback
22¼" W 25⅝" D 32¾" H



K58DD
Vertical Insert Back
22¼" W 25⅝" D 32¾" H



K58EE
Fully Upholstered Back
22¼" W 25⅝" D 32¾" H



K58HH
Button Back
22¼" W 25⅝" D 32¾" H





Each horizontal slat is individually shaped and hand set to support the lower back.

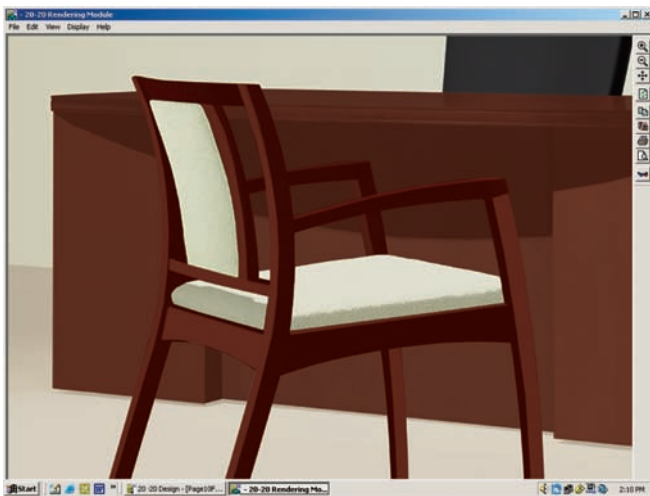
Perfect complement.

Sleek and elegant with definitive lines, Beo's thoughtful details make it more comfortable. The back has an enveloping contour to cradle the torso, while the softly sloping arms provide support from elbow to fingertip.

- A wide choice of wood finishes, ranging from rich, deep shades to warm light tones, is offered.
- Upholstery options include all Kimball Office fabrics and leathers, Alliance Program upholsteries, as well as COMs and COLs.
- Beo is certified to meet the requirements of the U.S. Green Building Council's LEED® rating system for indoor air quality. See our website for certificate and specific product details.



Kimball® Office. A place that works for you.



To view all the options and finishes available on Beo, ask your Kimball Office representative to render it in **e-magine**, our planning, specification and visualization software.

www.kimballoffice.com

A Unit of Kimball International 1600 Royal Street Jasper, Indiana 47549 800.482.1818

Due to the limitations of the printing process, printed colors may vary from actual finish samples. Product details and other data are subject to change without notice. Your Customer Care Team will be happy to answer any questions you may have.

Cover product specifications: Beo K58DD, Pollack Flutter 2211/06 palm, Amber finish; Definition casegoods.